

Drynews

2015
Drytech
Waterproofing System, Fall/Winter 2015



Build

Build



Useful. Stable. Beautiful.

For Renzo Piano, architecture is a civic art. Those who build have a great responsibility to do things well. Because then they will remain there for everyone to see for decades. Because people will live there. And even those who don't live there may have to walk past them every day. If you build and make a mistake, it's too late.

As professional waterproofers, we are part of this process and share the same responsibility to do things well. Our job is to build watertight structures, and our judges—strict but fair—are water and time.

In De Architectura, Vitruvius establishes that a building must satisfy three fundamental principles: utility (utilitas), stability (firmitas), and beauty (venustas). Useful, stable, beautiful.

The usefulness of waterproofing is obviously inscribed in the name. To ensure this, we have theorized, introduced, and developed the concept of watertight structure design. Through collaboration with the structural engineer, we are able to incorporate the measures that make it structurally waterproof into the project. This consultancy continues throughout all construction phases, assisting the company in taking full advantage of the time and resource savings achieved by the Drytech Tank.

Stability is the other side of a waterproofing system. The watertight seal must last the life of the building. This is why both the Drytech Tank for waterproof structures and the Drycoat membrane for waterproofing surfaces are systems that allow for maintenance, over time and at any time.

And the beauty? With its perfect correspondence between structure and function, the Drytech Tank gives full expressive freedom to architecture even for basements. Which are not just garages - in this issue of Drynews you can find some beautiful ones - but also SPAs, gyms, homes! If we then think about waterproof surfaces, from terraces to flat roofs, from swimming pool coverings to shower coverings, the Drycoat covering offers a range of aesthetic solutions that adapts like a second skin to the architectural project.

Utility, solidity, beauty, and responsibility: let's work together to build well.

Andreas Krattiger

A handwritten signature in dark ink, appearing to read 'A. Krattiger', positioned below the printed name.

CEO Drytech Group

22

2/ Rebirth

Cornaredo Farmhouse

6/ 27

Residenza 27, Lugano

10/ The dreamed forest

Tenuta de l'Annunziata, Uggiate con Ronago

14/ In the vineyard

Villa Scintilla, Morcote

20/ Sew up

Underpass, Crema

22/ Drawn by trees

Scuola dell'infanzia, Lamone

28/ Il cuore di un quartiere

Centro scolastico, Cadro

34/ Beautiful époque

Victoria Beach Lido, Menaggio

38/ In profile

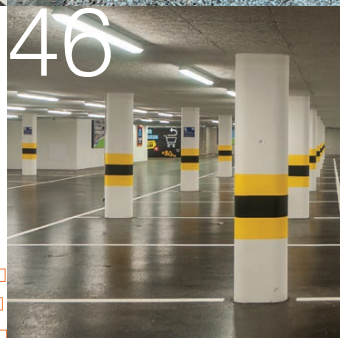
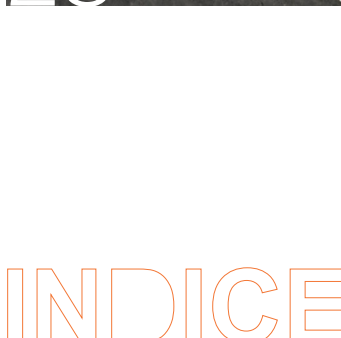
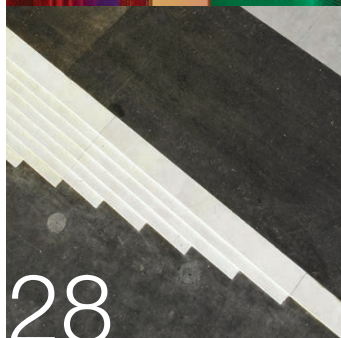
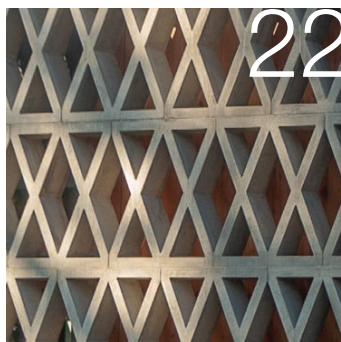
Semi-detached villa, Cureglia

42/ Prima del treno

Sottopassi ferroviari, Canton Ticino

46/ Super

Edificio residenziale e commerciale, Minusio



INDICE

Drynews
June 2025

Newsletter
Drytech Group
Gli specialisti
dell'impermeabilizzazione

Rebirths

The Masseria di Cornaredo is a courtyard complex of rustic Lombard architecture, a testament to the peasant culture of the rural areas of Lugano.

Nestled between the ultramodern Swiss National Supercomputing Center and the sports complex where Lugano's new stadium and sports hall are being built, the Masseria stands out like a fascinating anachronism.

A treasure trove of time that, upon entering, envelops you in a cocoon of bucolic tranquility. A feeling so powerful it silences the clamor of traffic—who knows if truly or merely psychologically.

Precisely because of the building's historical content, architect Roberto Marcon's project was predominantly conservative. This approach allowed for the preservation of the façades and perimeter walls, the roof repair, and the restoration of architectural and structural elements. At the same time, the project radically redesigned the spaces and interior architecture, adapting them to the new functions.

Starting with the west wing, originally used as a barn and warehouse and now converted into a tavern and inn. The building featured two completely open façades: one facing the courtyard and the other at the front. The renovation preserved the prominent stone pillars, enhanced by the contrast of the dark metal stringcourse of the floor slab. These large frames are filled with floor-to-ceiling windows for the tavern on the ground floor and with irregular wooden plank infill on the upper floor, where the inn's eight rooms are located.

The new uses of the east wing reflect the vision and energy that led to the project's realization. After being unused for over thirty years, the historic farmhouse was restored to become a social center at the instigation of Friar Martino Dotta, director of the Francesco Foundation, and with the support of the Rotary Club Lugano Lago and the Municipality of Lugano, among others.

Brother Martino Dotta saw the abandoned farmhouse as a place to continue and consolidate the activities of the Bethlehem Social Center, which provides essential humanitarian support to anyone in need, including social counseling services, breakfast, lunch, and dinner, showers, laundry, a change of clothes, and internet access. Spaces for these activities have been created on the ground floor of the east wing, starting with the welcoming soup kitchen. The first floor houses the Francesco Foundation for Social Aid, of which the Bethlehem Center is an offshoot.

Also on this level, a large 80-seat multipurpose room has been created, equipped with a projection system, open to the public for organizing meetings, conferences, association meetings or company courses, obviously integrating with the Osteria's services.





L'accesso alla sala multiuso è garantito da una modernissima passerella sospesa in acciaio e vetro che offre una vista suggestiva sull'orto della Masseria e sul vicino Frutteto Urbano: un'area di verde pubblico che fa parte del Project di riqualificazione del quartiere, creata dalla Città di Lugano in cooperazione con ProFrutteti e Alleanza Territorio e Biodiversità.

As part of the Masseria's renovation, the City of Lugano supported the restoration of the large lever press located on the ground floor of the east wing, a listed building. The restoration of the historic pomace press from the early 19th century, with its colossal, almost 11-meter-high horizontal shaft, has created a charming setting for wine tastings, small receptions, and breakfasts for the inn's guests.

ticino@drytech.ch



Rebirths

Project: Roberto Marcon Architecture Studio, Melide
Structure: Borlini & Zanini Engineering Firm, Montagnola
Construction: Construction company Aldo Lepori, Cadempino
Drytech Tank: Waterproof slab



27

The architecture of Residenza 27 works with volumes, materials, and colors to enhance the individual components of the property. A composite representation that, precisely in these differences, finds perfect architectural unity.

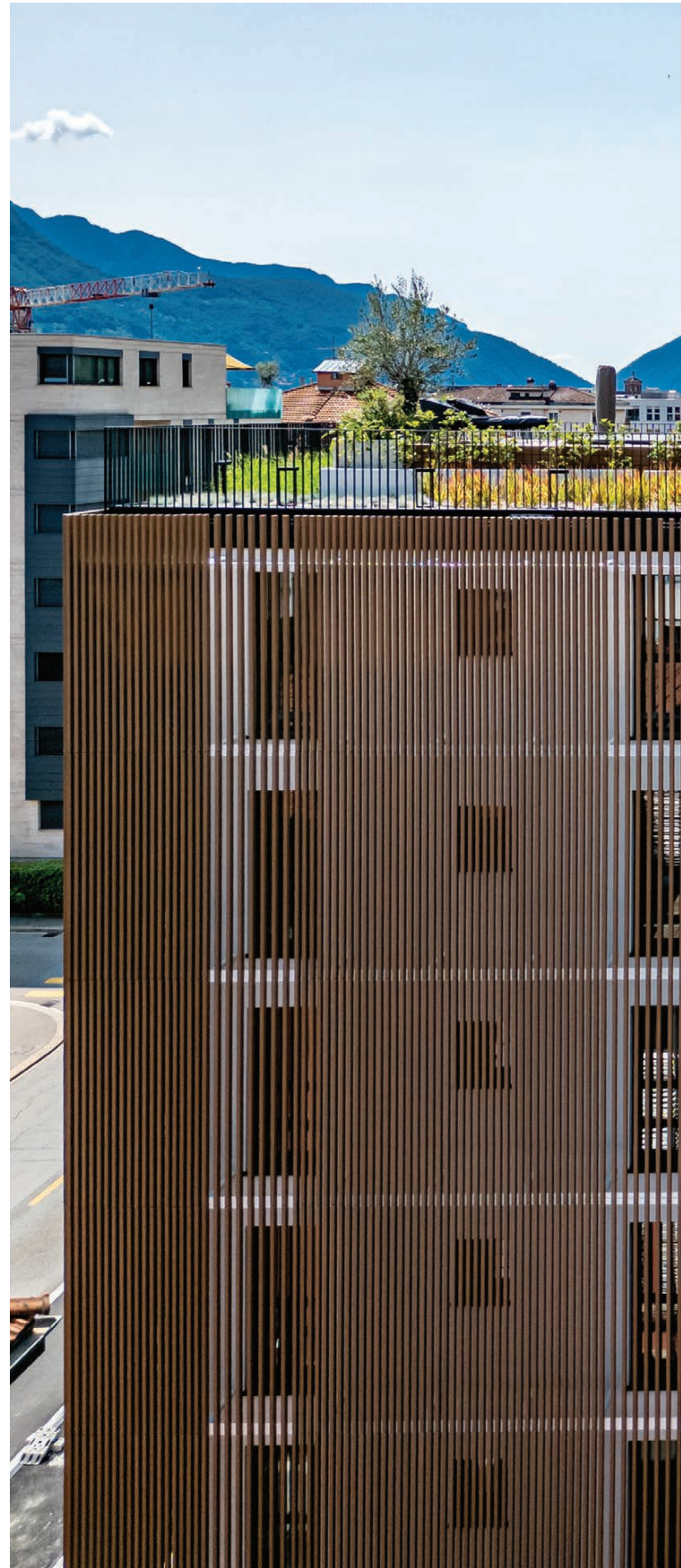
Three dominant colors—black, white, and brown, plus the gray of the podium dedicated to the retail space—underline and define different focal points.

The penthouse, clad in burnished aluminum, is partially suspended outside the main volume. The white facades are punctuated by geometric window openings. The enveloping, organic brown of the sunshade skin encompasses an entire corner of the volume and prevents direct sunlight from reaching the apartments thanks to an automated slat adjustment system.

Finally, the property is completed by large suspended terraces, also exposed to the body of the building: black frame and surface in the same gray stone as the podium.

The Residenza 27 project was born to convert an obsolete residential area with the construction of a new energy-sustainable building, certified Minergie-P and made entirely of recycled concrete, offering apartments with high living comfort.

The building has a total of 6 floors above ground and includes 11 exclusive apartments of various sizes, from 2.5 to 4.5 rooms.







27

Property: Immo-rail, Lugano
Project: Extempore Studio Architettura, Manno
Structure: Studio Ing. De Bernardis, Massagno
Construction: Riva Construction, Tremona
Drytech Tank: 1'540 m²



The two underground levels, built with the Drytech Tank waterproof structure - also made of recycled waterproof concrete - house the garage, the technical rooms and the cellars.

Drytech also waterproofed the ramp and parking decks, as well as the house's perimeter eaves, using Drycoat waterproof architectural membrane.

The underground garage has numerous parking spaces for cars and motorcycles, all equipped with electric vehicle charging stations, as well as a bicycle parking area. The common areas also include a space for strollers and scooters.

ticino@drytech.ch

The dreamed forest



A breathtaking view and an ancient tower rising above the trees at the top of the hill, in a location that made it attractive since Roman times.

Built in the 19th century by Francesco Somaini on the hill of Uggiate con Ronago, near Como, and unused since the 1950s, the property, nestled in over 13 hectares of woodland, was purchased in 2007 by the Guffanti-Pezzoli family.

10

Through a thorough restoration project, Tenuta de l'Annunziata has become an oasis of peace dedicated to sustainable hospitality and the enhancement of the environmental heritage in which it is immersed.

Today it is run with enthusiasm and a desire to share the genuine emotions and elegant hospitality of three young members of the family: Arianna, Elisabetta, and Adriano Guffanti.

The Natural Relais, inspired by a holistic concept of well-being that finds its ultimate expression in the relationship between man and nature, offers 21 rooms of various types, all sharing a splendid view that embraces the chestnut grove in which they are nestled and opens onto the surrounding hilly landscape.

The materials, furnishings, fabrics, and colors chosen for the rooms reflect the colors and atmospheres of the



Photo: Vincenzo Tambasco

surrounding nature, creating a direct connection between indoors and outdoors, emphasized by the abundant light in each space.

The wellness area of Tenuta de l'Annunziata is an island of well-being for the body and mind that extends over 1,500 m².

The Wellness Farm (SPA and Wellness Center) extends across various areas:

an outdoor swimming pool—designed by the Venelli Kramer Progetti Architects Studio and the Giovanni Lentinu Surveyor Technical Studio, built with the Drytech Tank waterproof structure—an indoor swimming pool with underwater music and vertical neck massage jets, a whirlpool, a Kneipp path, a hammam, a Turkish bath, a Finnish sauna, a herbal sauna, emotional showers, an ice fountain, a relaxation room, a solarium, and a tea room.

All the products used for the treatments are made from internal agricultural production - mainly forest herbs, flowers and berries - creating a carefully selected cosmetic line signed Tenuta de l'Annunziata.

Unique in Europe, the Bioenergetic Forest makes the Tenuta an internationally avant-garde holistic center. A green oasis structured along a path marked by forty different areas, where the presence of specific tree species creates bioenergetic conditions that achieve particularly intense beneficial effects on specific organs or systems.

These are the principles of Forest Therapy that can be practiced at Tenuta de l'Annunziata, in addition to meditation courses (such as contemplative walking or forest bathing) and forest therapy, which are also offered for small groups with the help of professionals and mindfulness experts.

Quercus Restaurant, under the supervision of Gastronomy Director Domenico Ruberto, develops the concept of classic Mediterranean cuisine that respects tradition and the environment.

The highest-quality raw materials come directly from the company's own lands and farms and are meticulously selected every day to extract and incorporate the authentic flavor of each ingredient into every dish.

Each dish becomes a true journey, where the cuisine blends with the mastery of the service in the dining room, creating a true union of hospitality.

A completare l'offerta la presenza anche di Tree Cocktail Bar & Bistrot che offre un'accurata selezione di cocktail e mocktail, tutti accompagnati da una cucina casual dining.

Art, well-being, nature, and hospitality remain the hallmarks of Tenuta de l'Annunziata's history.

italia@drytech.ch



Photo: Vincenzo Tambasco



Photo: Vincenzo Tambasco



Photo: Vincenzo Tambasco



Photo: Vincenzo Tam-



Photo: Vincenzo Tambasco



Photo: Vincenzo Tam-

Project: VenelliKramer Architecture Studio, Como
 Structure: Ing. Silverio Tettamanti, Cermenate
 Construction: Impresa Bruzzese, Guanzate
 Pool: Alpha Pools, Como
 G.D.I.P. Impianti, Como
 Drytech Tank: 131 m²



TENUTA DE L'ANNUNZIATA
 natural relais

In the vineyard





Two transparent pavilions and a stone pool. This is all that's visible of a 600-square-meter villa nestled into the slope of a hill overlooking the lake. The project by Roberto Marcon Architecture Studio establishes various levels of dialogue with the context, both from the outside and from within the building.

The villa borders a vineyard, whose terraces seamlessly extend across the property. To maintain this flow, the emerging volumes are staggered by half a floor.

On the main façade, the two pavilions, dedicated to the kitchen and the living area respectively, have floor-to-ceiling glass walls that reflect the surroundings, amplifying the osmosis with the context.

L'arretramento delle facciate rispetto al profilo del tetto, oltre a creare due portici, definisce ed esalta la sensazione di trasparenza e leggerezza della Structure. I portici sono protetti lateralmente da tamponamenti frangisole in legno che, insieme ai tetti verdi e ai muri in pietra, rafforzano il carattere organico dell'architettura.

Seen from the porch, the bottom of the garden appears even further away, thanks to the optical effect produced by the slightly trapezoidal shape of the Pool, which enhances its perspective.

The dialogue with the context finds original solutions even when the observation



In the vineyard





Project + W.D.: Studio di Architettura Roberto Marcon, Melide
 Structure: Marcionelli & Winkler + Partners, Lugano
 Construction : Giovanni Quadri, Cadempino
 Interior design: Studio di Architettura Roberto Marcon, Melide
 Drytech Tank: 1'125 m²



point shifts inside the villa. The main view from the living room and kitchen is not directly facing the lake, but diagonally across the floor plan of the two volumes. A traditional perspective would obstruct a view of the lake from the kitchen, and vice versa, the vineyard from the living room. Therefore, the main openings were placed at the corners of each pavilion, creating a completely unobstructed diagonal view across the floor plan.

There's also an aesthetic reason behind this choice: the corner windows frame, on one side, the profile of the hill on which Morcote Castle stands, and, on the other, an even more evocative glimpse of the lake. These veritable paintings are simultaneously visible from any point in the kitchen and living room.

On the opposite side to the pool is a large terrace, which also extends to the lawn that the property shares with the vineyard.



Below it lies the villa's most private level, whose rooms are arranged around a large, dramatic atrium, confirming the fusion of interior and exterior spaces. This level faces completely towards the lake.

To enhance this profound osmosis with the context, both structurally and visually, the Roberto Marcon architecture firm also dedicated itself to the interior design: from the furnishings to the fitted walls, from the kitchen to the wood paneling, all created by MV Design of Chiasso.

Both the bedroom level and the level below, which houses the main entrance and garage, rest on the hillside. The particularly impermeable soil prevents water from seeping directly into the basement. Therefore, the uncompromising waterproofness of the Drytech Tank was chosen for the project, as was the stone-clad pool.

ticino@drytech.ch



In the vineyard





Sew up

Last December, the new road underpass was opened near Crema station, replacing the level crossing that allowed the crossing of the Cremona-Treviglio railway line.

The project, built by RFI and co-financed by the Lombardy Region, will reconnect the urban fabric, making road and rail traffic independent.

In addition to the vehicle lane, the underpass has a dedicated lane for bicycles and pedestrians. The structure was constructed with a reinforced concrete monolith measuring 10.5 meters wide, 5.9 meters high, and 21 meters long. Added to this are two decks, one upstream and one downstream, measuring approximately 8 and 14 meters, for a total length of approximately 43 meters.

Drytech created the waterproof structure with a complete Drytech Tank (slab, walls, and floor) designed to withstand both the vibrations of rail traffic and temperature variations, maintaining watertightness in compliance with the structural design by engineers Carraro and Stella.

The Drytech waterproof concrete recipe itself was developed in collaboration with the plant selected by Quadrio Gaetano Costruzioni.

The project is part of the overall redevelopment of the train station area, which will include a new bus hub, a cycle/pedestrian path along the avenue, and the regeneration of the entire quadrant led by the Municipality of Crema.

italia@drytech.ch



Client: Rete Ferroviaria Italiana, Milan
Structure: Ing. Carraro, Ing. Stella
Construction : Quadrio Gaetano Costruzioni, Morbegno
Drytech Tank: 693 m²

Drawn by trees

The project by architects Krausbeck Santagostino Margarido, inaugurated last November, is the result of a careful interpretation of the site. A large, predominantly green and public block, it serves as a transition between the compactness of the town center and the more recent suburban developments.

The new school, with its own garden, is located in a context marked by fences that delimit external spaces for specific uses—such as the cemetery, the churchyard, and the courtyard of the parish house. The geometry of the enclosure's boundaries adapts harmoniously to the surrounding pre-existing structures, aligning with the presence of the trees and generating changes in the layout of the boundary wall. The resulting outdoor space, located between the fences, transforms into a new urban park, enhanced by the almost complete preservation of the trees. The perimeter takes on various configurations—retaining wall, terraced garden, equipped wall, or perforated fence—simultaneously addressing the slope of the land, the visual relationships, and the protection of the school, while maintaining the distinctiveness of the various outdoor spaces.

The materiality of the fence, which alternates opaque lines with perforated elements, reflects the architectural expression of the school building, which extends over two levels above ground and one underground parking lot. This project generates two themed school gardens, created thanks to the building's central positioning.

The ground floor has a free and fluid plan, structured by the presence of the staircase and service blocks. The continuous windows are screened by the porticoes that constitute the covered outdoor play areas. The upper floor has a different character: a sequence of structural partitions punctuate the different spaces. On the long facades, the continuous glass windows are partly masked by modular sunshade elements which guarantee appropriate management of light, shadows and views.

The underground parking garage located beneath the school has 26 spaces. The foundation, which also includes the utility rooms, was constructed using the waterproof Drytech Tank structure, including the access ramp to the basement.

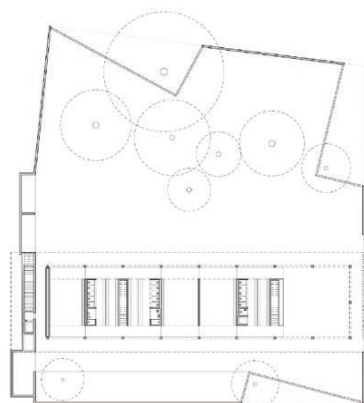
The main entrance to the building is maintained along the two porticoes on the ground floor. Two covered external passageways connect the two gardens. The most frequently used spaces are located on the ground floor, directly connected to the entrance and the gardens: the atrium, restrooms, and quiet room. The upper floor houses the spaces regularly occupied during the school day: the dining halls and exercise rooms, support areas, the staff area, the kitchen, and storage areas.

On the ground floor, the atrium of each section extends through the two porticoes that connect the classrooms to the gardens, minimizing the intersection of internal dirty/clean routes. On the upper floor, an internal corridor, adjacent to each stairway, provides direct access to the dining halls without crossing the exercise room.





Property: Municipality of Lamone
Project: Krausbeck Santagostino Margarido, Salorino
Structure: CSD Ingegneri, Lugano
Construction: Giovanni Quadri, Lamone
Drytech Tank: 1'450 m²





Drawn
by trees





The kitchen was located at the northern end of the upper floor. Access from the street and the respective vendor parking area is via an external ramp that bridges the gap between the kitchen and the sidewalk. This second access to the upper floor, directly from the outside, primarily serves the kitchen but adds a further degree of flexibility to the entire building. The level can, in fact, be used sporadically for public activities outside of school hours, thanks to a room created by joining the two exercise rooms, which can be separated by movable partitions.

From an energy point of view, the thermal insulation of the envelope guarantees a low use of installed power, respecting the energy parameters of the RUEn: in particular the increased requirements for public buildings which must be built and certified according to the Minergie standard.





Drawn
by trees



In quest'ottica, la produzione di calore per il riscaldamento e l'acqua calda sanitaria è garantita da una pompa di calore aria/acqua posizionata nel locale tecnico al piano interrato, unitamente all'unità di trattamento dell'aria, che produce un'aerazione controllata con sistema di recupero di calore efficiente.

Una scuola per l'infanzia disegnata tra gli alberi è un posto bello e sano in cui crescere.

ticino@drytech.ch

The heart of a neighborhood





The new Cadro nursery school and the expansion of the elementary school services in 1980 reflect the City of Lugano's decision to prioritize local schools over centralization, with the aim of freeing neighborhoods from purely residential functions, making them vibrant and lived-in for children and, consequently, the families who live there.

The plan of the existing school shows a structure with parallel walls that determines a series of adjacent rooms.

The project by Boltas Bianchi Architetti recognizes this system and, consequently, proposes the same structural principle divided into two parts: a body for the elementary school spaces which, placed in continuity with the exi-

sting building, confirms the parallel layout, while the nursery school structure is articulated through perpendicular partitions that mark the four sections of the new preschool.

The architecture harks back to the original layout of the facades, but reinterprets their proportions: in the thickness of the concrete frame, in the

purity of the floor-to-ceiling windows, in the alternation with the solid infill walls.

This wing houses after-school activities, a cafeteria, a kitchen, and staff quarters. This architectural expansion also includes expanded services, such as extended hours and a cafeteria, allowing families to balance work commitments with childcare.

All these spaces overlook the square and, having independent entrances, act as an autonomous system, despite being internally connected to the nursery spaces.

From an urban planning perspective, the new elementary school structure

defines an open square, whose symmetry is resolved, on the opposite side, by a shelter for bicycles and motorbikes that compensates for the length of the wings, echoing the stylistic features of the main extension.

The fourth side of the square is open to the street and establishes the public dimension of the complex, creating a meeting and gathering space for children and an area for neighborhood events.

While the new elementary school pavilion integrates with the existing one, the perpendicular body of the kindergarten interacts with the topography of the site and the surrounding houses.

From the descent leading to the school, only the second level is visible, which contains all the stylistic features that characterize the entire work.

The setback of the ground floor façade helps make this first view perfectly consistent with the aesthetics and proportions of the single-story elementary school.

Access to the preschool is independent and is through a protected portico with separate entrances for each section. On the entrance level, passing through the atriums, you reach the dining halls overlooking the internal garden reserved for the children.





The heart of a neighborhood



The upper floor houses the quiet rooms, exercise rooms, and hygiene areas.

The panoramic glass walls of these rooms offer views of the entire valley towards Lugano, creating a permanent connection with the landscape.

Inaugurated last October, the new nursery school has four sections, with a maximum capacity of 100 children.

Like the entire foundation slab, the retaining wall and the AIL cabin (located under the main staircase) were constructed using the Drytech Tank waterproofing system. The retaining wall tunnel slab, which supported the flowerbed bordering the school, and the electrical cabin slab, as well as all street-level windows, were waterproofed using Drycoat architectural coating.

The school complex now covers an area of 12,540 m² and was built to the Minergie A energy standard. Photovoltaic panels were installed on the roof of the preschool, also in continuity with the primary school. The perimeter free of panels is a green roof. Gardens are irrigated by an underground rainwater tank.

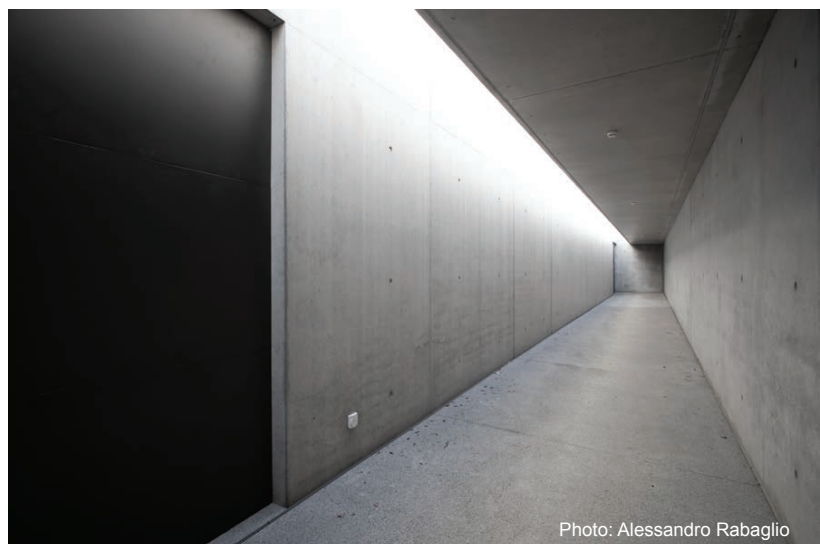


Photo: Alessandro Rabaglio

ticino@drytech.ch



Property: Comune di Lugano
Project: Boltas Bianchi Architetti, Agno
Structure: Roger Bacciarini & Co., Maroggia
Construction : Taddei, Viganello
Drytech Tank: 1'776 m²

The heart of a neighborhood

Beautiful époque

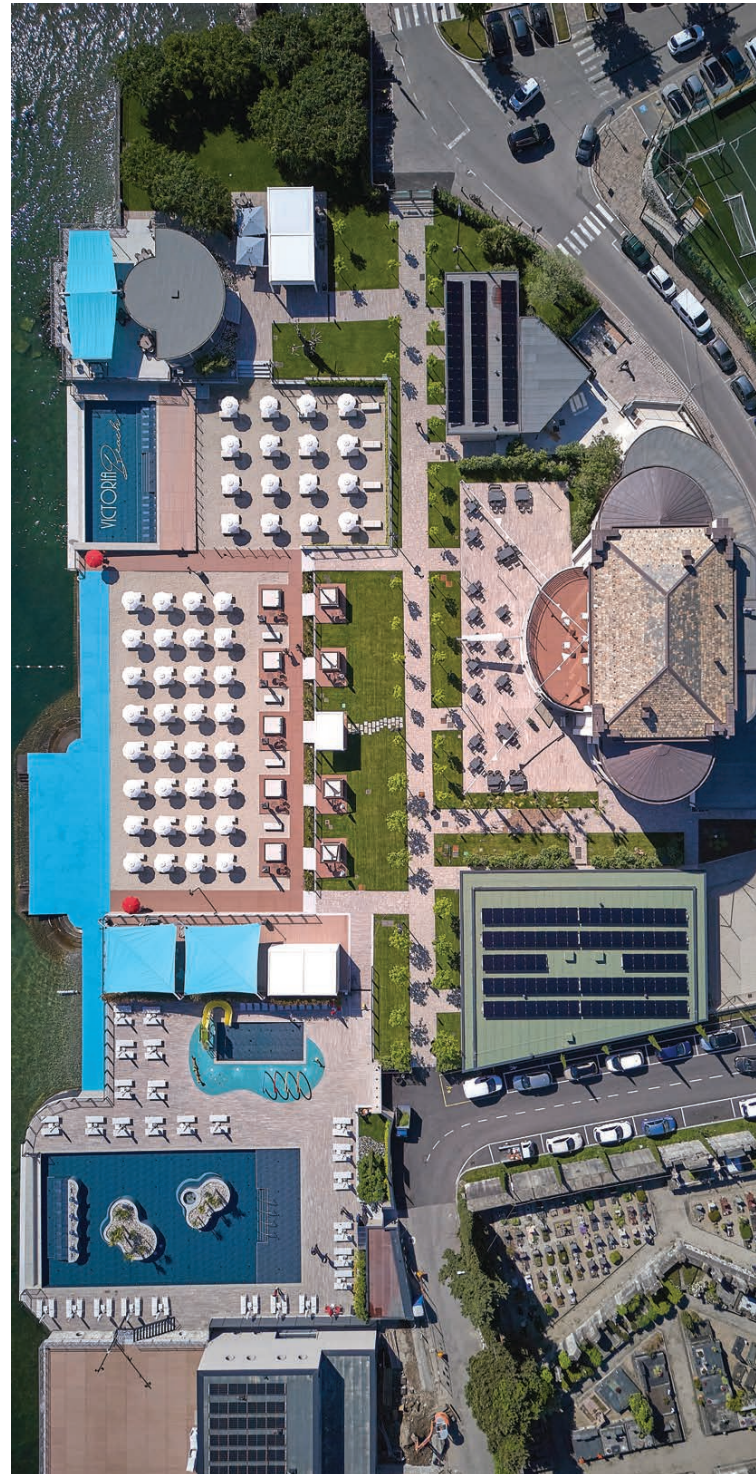


The renovation of the historic Lido di Menaggio adds another gem to the picturesque shores of Lake Como. The Pe' di Carimate architecture firm remodeled the interiors of the Rationalist building and reorganized the beach, creating an elegant and engaging structure: a beach club that, in addition to the lake, offers wellness, music, dining, and entertainment.

The Victoria Beach is an offshoot of the Grand Hotel Victoria in Menaggio, part of the R Collection Hotels Group, which was also renovated by the Pe' studio.

Inaugurated in July 2024, the new lido features, in addition to the charming sandy beach, three swimming pools, a restaurant, two snack bars and an elegant three-story structure with spaces for events.

The pools were constructed using the waterproof Drytech Tank structure. The first, a fully infinity pool, allows you to literally immerse yourself in the lake atmosphere, creating a seamless optical illusion between the two bodies of water. A second pool is designed specifically for children, who can



play and unleash their energy in complete safety. Finally, the larger pool blends harmoniously with the surrounding vegetation, complemented by the internal greenery that creates an oasis of freshness and tranquility.

Drytech also created the waterproof structures for the technical rooms and for the swimming pool service systems.

The historic three-storey building which has always been the symbol of Lido di Menaggio has become the hub of hospitality and event services. On the first floor the restaurant offers a

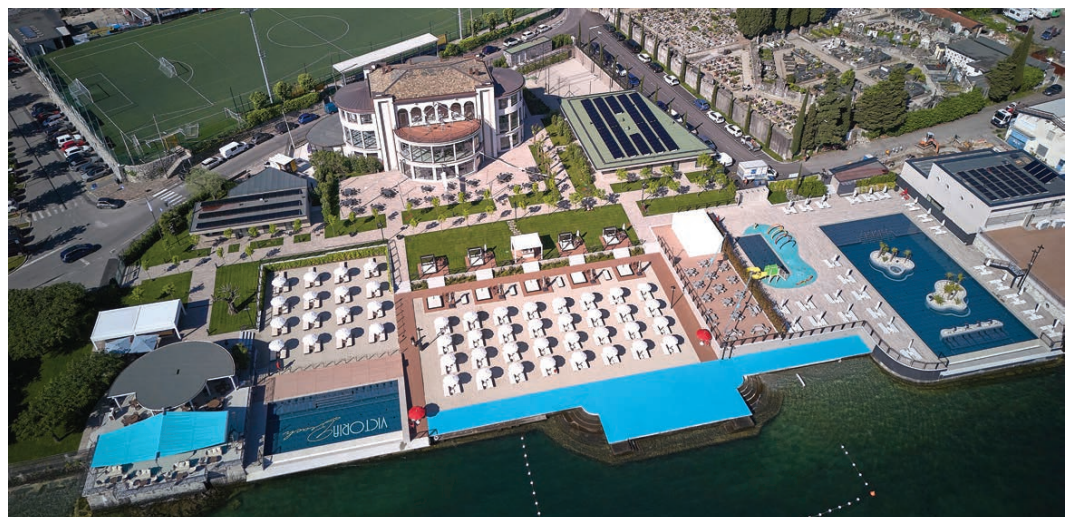
fresh and light menu for lunch, consistent with beach life. At dinner it is enriched with more elaborate proposals, also served in the glass room on the first floor. The second floor houses a single large hall dedicated to events. The Roof has a capacity of 250 seats and opens onto a large terrace overlooking the lake, perfect for social events with the lights and colors of the Lario as a backdrop.

The Structure is completed by two themed bars, each with its own distinct identity and atmosphere. The Patio is an elegant cocktail bar where you can also enjoy live music events by the lake. The Victoria Beach Pool Bar, located near the

children's pool, is dynamic and informal, just like a beach bar should be. Enjoy ice cream and fresh fruit salads, perfect for a refreshing break under the summer sun.

Victoria Beach also features an area specifically dedicated to sports enthusiasts and those seeking more active physical activity, with several sports fields. Naturally, the beach and the lake are and remain the absolute stars of summer on Lake Como, with comfortable loungers, white umbrellas, and inviting cabanas.

italia@drytech.ch



Property: R Collection Hotels Group, Varedo
Project: Studio Pe' Architettura e Design, Carimate
Structure: Studio Ingegner Tettamanti, Cermenate
Construction : Quadrio Gaetano Costruzioni, Morbegno
Drytech Tank: 1'400 m²







Photo: Alain Intraina

In profile

The façade is the profile. Nestled between two equally iconic buildings, the villa designed by architect Mauro Galfetti presents itself first and foremost with its perfect Brutalist profile. And it captivates the eye. The street-facing wall is a stark, yet it is pervaded by a powerful dynamic of solids and voids, successive planes, and lines that allude to functions—like the parapet concealing the entrance staircase, or the asymmetrical recesses of the porticoes on opposite sides.

Beneath the entire property is a basement level constructed with a complete Drytech Tank—slab, foundations, and floor—which houses the basement level of the first apartment, illuminated by a large patio parallel to the street, as well as the garage and utility rooms. The waterproof Drytech concrete slab forms the foundation for the garden.

Both residential units have large open spaces on the ground floor with a fully glazed front wall, which opens onto a symmetrical garden, framed on the sides by two private swimming pools.

The waterproof structure of the pools is also a Drytech Tank, whose above-ground surfaces are coated with the seamless, waterproof Drycoat membrane. At 3 millimeters thick, it adapts like a second skin to the architectural lines.

In fact, it was also used to seamlessly waterproof the entire porch threshold and the French window frames.

The granite cladding of the porch floor and the edge of the pools was laid directly on the Drycoat covering.

The building is powered by a heat pump system.

The first floor, dedicated to the sleeping area, has windows and terraces set back from the facade, in keeping with the character of the architecture.

With this latest addition, the small street that hosts the three villas has become one of the most architecturally significant streets in the region.

ticino@drytech.ch



In profile



Photo: Alain Intraina



Photo: Alain Intraina

Project: Architetto Mauro Galfetti, Viganello
Structure: Casanova Ingegneria, Pazzallo
Construction : Impresa Taddei, Viganello
Drytech Tank: 1'300 m²

Before the train





Starting in December 2023, SBB will make five more train stations south of the Alps more accessible by removing architectural barriers, modernizing the furnishings, and installing state-of-the-art travel information systems.

Drytech waterproofed the new ramps and stairs leading to the underpasses at the Taverne-Torricella and Balerna stations.

The stairs and ramps were built using the Drytech Tank System: a structural approach to waterproofing concrete structures that guarantees reliable watertightness over time, also thanks to ease of maintenance.

The existing underpasses were also made waterproof. In this case, precise injections of expanding resin repaired the concrete from leaks that had occurred over time.

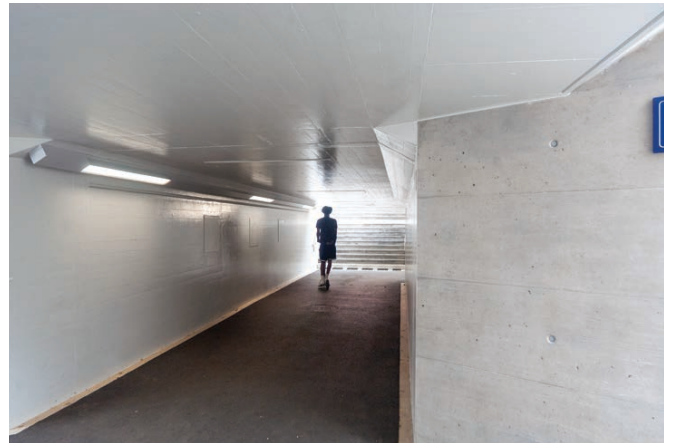
In addition to those in Balerna and Taverne-Torricella, the SBB has also removed architectural barriers in Maroggia-Melano, Giubiasco, and Biasca.

In Balerna both pavements have been raised and lengthened, three new access ramps have been built and a new waiting room has been created. At Taverne-Torricella the pavement on platforms 2 and 3 was raised, and here too three new access ramps were built and a waiting room was created.

At Giubiasco station, the two central platforms have been raised and lengthened, and the stairs and access ramps from the underpass to platforms 2 and 3 have been adjusted to the new heights.

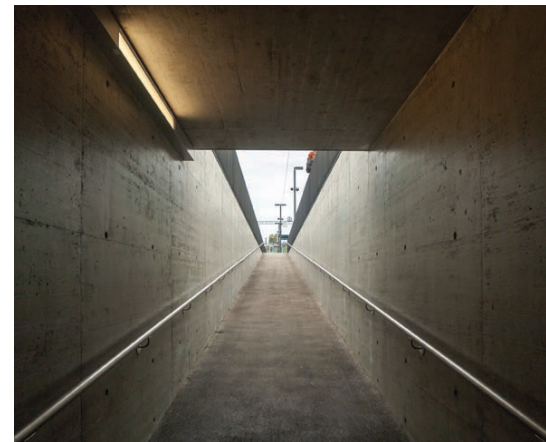
The main access ramp (from Viale Stazione) has been completely redone and the secondary access from Via Moderna has been covered.





Taverne-Torricella/
Structure: Comal Ingegneria, Lugano
Construction : Cons. Tato
Drytech Tank: 785 m²





Balerna/
 Structure: Comal Ingegneria, Mendrisio
 Construction : Cons. Casada+Reali
 Drytech Tank: 640 m²

In Biasca, the central platform was raised and lengthened to accommodate trains up to 420 meters long. Here, too, the stairs and access ramps to the underpass were adjusted to the new heights.

At the Maroggia-Melano station, work began with the first phase in December 2021, when the central platform was raised and equipped with a new, modern waiting room. The second phase included the installation of two elevators, the renovation of the main access stairs, and the construction of a new staircase and a new ramp parallel to Platform 4.

ticino@drytech.ch

Super





The building designed in Minusio by Aldo Cacchioli Architecture overlooks the main road, characterized by a sculptural interplay of solids and voids. At the center of the façade, a large opening separates and defines the two main buildings, which are architecturally connected by the large first-floor terrace and the suspended attic. This creates a veritable skyscape, establishing the building's dynamic character.

This character is reiterated by the bronze pillars of the commercial floor, which allude to Roman letters or numerals emerging from the ground, and by a band of color that runs across the first floor and continues on the ceiling of the portico, which in turn is crossed by luminous lines.

At the corners, the cuts of the deep recessed terraces empty the volume, while narrow windows give movement to the facades.

On the opposite side, facing the lake, large terraces run the entire length of the apartments, offering a panoramic view from every point in the apartments.

At street level there are several commercial spaces and a neighborhood supermarket, served by a dedicated parking lot on level -1, while the residents' garage is on level -2 with separate access.

ticino@drytech.ch





Super



Project: Aldo Cacchioli Architecture, Locarno
Structure: Pianifica Ingegneria, Locarno
Construction : Impresa Barella, Chiasso
Drytech Tank: 1'740 m²

DRYTECH

ITALIA

Drytech Italia Impermeabilizzazioni Srl
Via Valtellina 6
I-22070 Montano Lucino CO
+39 031 47 12 01
italia@drytech.ch

SVIZZERA

Drytech SA
Via Industrie 12
CH-6930 Bedano TI
+41 91 960 23 40
ticino@drytech.ch

GERMANIA

Drytech GmbH
Im Altenschemel 39a
D-67435 Neustadt
+49 6327 97 22 50
info@drytech-germany.de

BERLINO

Motzener Straße 12-14
D-12277 Berlin
+49 30 475 954 05
info@abdichtung-in-berlin.de

FRANCOFORTE

Freudenthaler Straße 39
D-65232 Taunusstein
+49 6128 306 688
frankfurt@drytech-germany.de

MONACO

Landshuter Allee 8-10
D-80637 München
+49 89 545 582 05
muenchen@drytech-germany.de

IRLANDA

Drytech Waterproofing Ltd.
Spring Garden Lodge - Sallins Road
Naas, Co. Kildare.
+353 45 83 11 60
ireland@drytech.ie

UK

Drytech Waterproofing Ltd.
Berkeley Square House
W1J 6BD, London
+44 20 3959 8611
uk@drytech.ch

CANADA

Drytech Waterproofing Ltd
30 Street SE
7032 Calgary - Alberta
+1 403 230 3050
canada@drytech.ca

**PARTNER
CERTIFICATI**

BASILEA

Mareas AG
Gebäudeabdichtung
Bottmingerstrasse 27
4102 Binningen
+41 61 525 15 15
info@mareas.ch

DANIMARCA

Christiansen & Essenbaek A/S
Ejby Industrivej 80
DK-2600 Glostrup
+45 88 888 203
info@ceas.dk

ITALIA DEL SUD

Edilo Srl
Via E. Gianturco 62-64
I-80146 Napoli NA
+39 081 734 94 33
campania@drytech.ch

PARTNER INTERNAZIONALI

international@drytech.ch
ARGENTINA **FRANCE**
AUSTRALIA **SOUTH KOREA**
BRASIL

