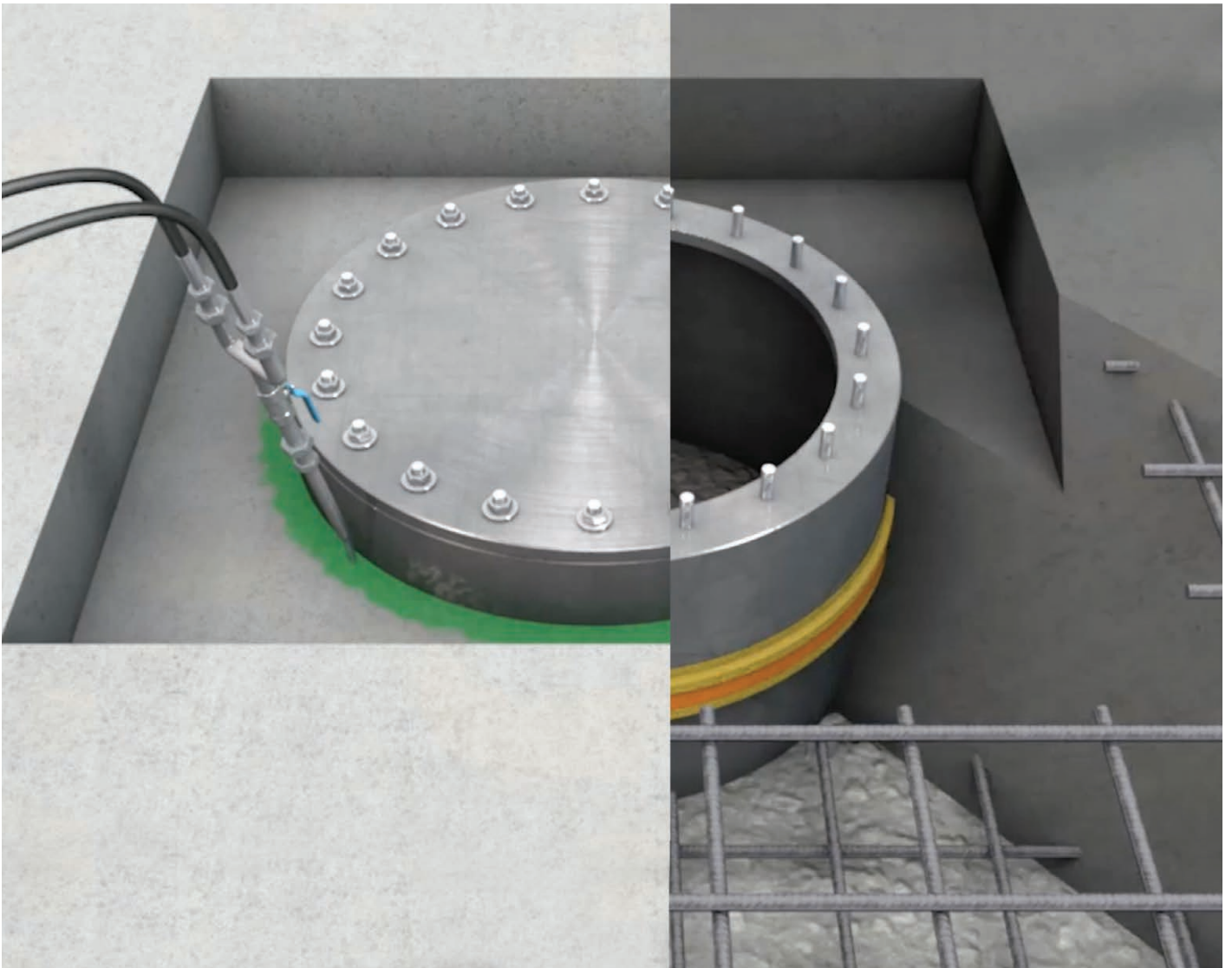


WATERPROOF PUMP WELLS IN BED



WATERPROOF PUMP WELLS IN BED

The Drytech waterproof pump well allows construction companies to create the embankment points inside the bed.

Once its function is exhausted, the Drytech pump well is incorporated into the bed and waterproofed both externally and internally:

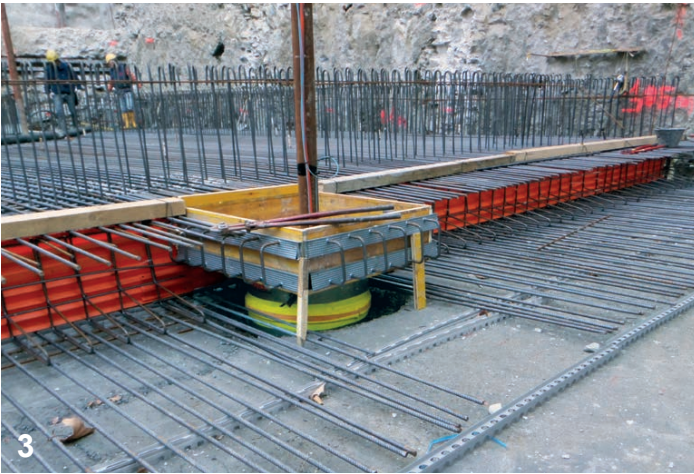
- > the outside of the well in contact with the bed is injected with DRYflex expanding resin, which seals the element throughout the thickness of the structure.
- > the inside of the well is sealed by the cover equipped with gaskets both on the circumference of the well and on each of the sealing bolts.





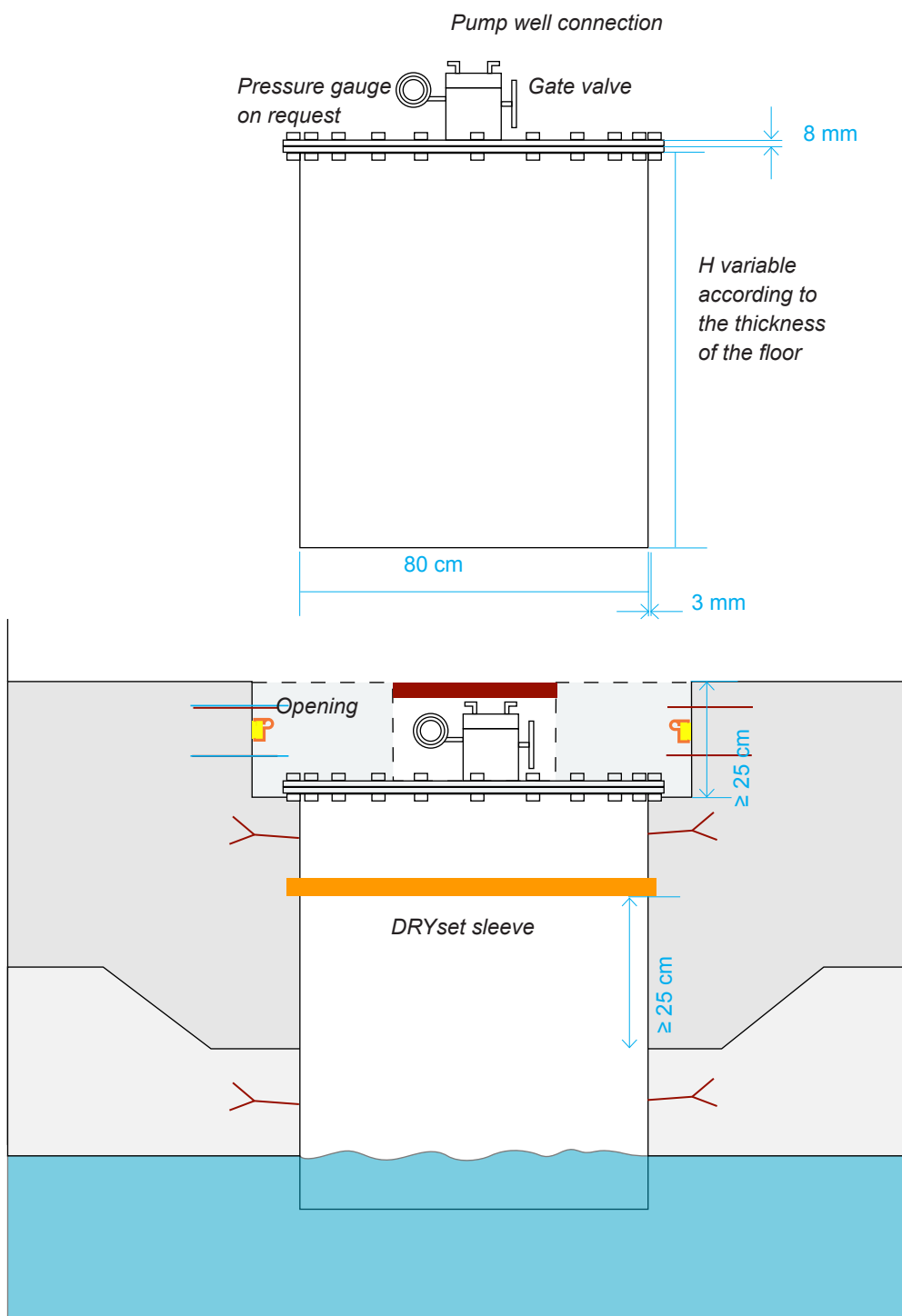
INSTALLATION AND WATERPROOFING EXTERNAL AND INTERNAL

1. Installation of the waterproof pump well in the embankment point within the perimeter of the bed.
2. Lean.
3. Formwork to create the opening in the bed.
4. Concrete bed.
5. Closure of the sealed lid and waterproofing injection of the outside of the well.
6. Presetting of the channels for the injection of the opening joint.



Inspectable watertight pump well

The Drytech waterproof pump well can be equipped with a lid with a gate valve that makes it inspectable and a pressure gauge to monitor the water table pressure.



HEAD QUARTER IN THE NORTH SEA



Drytech has created the waterproof structure of a large head quarter literally built in the North Sea.

Since the construction site is in the water, the 36 points of embedding were created within the perimeter of the bed with as many Drytech waterproof pump wells.

The wells are made in the Bedano workshop, in Switzerland, and shipped to the construction site, wherever it is in the world, where they are prepared by the Drytech technician.

The application of the Drytech Tank made the progress of the construction site faster and, consequently, reduced the period in which the drainage system had to remain active.

Once its function is exhausted, the Drytech pump bed is waterproofed both externally and internally.

Once the casting is complete, the joint between the well and the bed is injected with DRYflex expanding resin, which seals the element by pressure, wrapping around the entire thickness of the bed.

Any entry of water inside the well is instead controlled by the lid sealed with gaskets both on the circumference of the well and on each of the sealing bolts.





DRYTECH

ITALY

Drytech Italia Impermeabilizzazioni Srl
Via Valtellina 6
I-22070 Montano Lucino CO
+39 031 47 12 01
italia@drytech.ch

SWITZERLAND

Drytech SA
Via Industrie 12
CH-6930 Bedano TI
+41 91 960 23 40
ticino@drytech.ch

GERMANY

Drytech GmbH
Im Altenschemel 39a
D-67435 Neustadt
+49 6327 97 22 50
info@drytech-germany.de

BERLIN

Motzener Straße 12-14
D-12277 Berlin
+49 30 475 954 05
info@abdichtung-in-berlin.de

FRANKFURT

Freudenthaler Straße 39
D-65232 Taunusstein
+49 6128 306 688
frankfurt@drytech-germany.de

MUNICH

Landshuter Allee 8-10
D-80637 München
+49 89 545 582 05
muenchen@drytech-germany.de

IRELAND

Drytech Waterproofing Ltd.
Spring Garden Lodge - Sallins Road
Naas, Co. Kildare.
+353 45 83 11 60
ireland@drytech.ie

UK

Drytech Waterproofing Ltd.
Berkeley Square House
W1J 6BD, London
+44 20 3959 8611
uk@drytech.ch

CANADA

Drytech Waterproofing Ltd
30 Street SE
7032 Calgary - Alberta
+1 403 230 3050
canada@drytech.ca

**CERTIFIED
PARTNERS**

BASEL

Mareas AG
Gebäudeabdichtung
Bottmingerstrasse 27
4102 Binningen
+41 61 525 15 15
info@mareas.ch

DENMARK

Christiansen & Essenbaek A/S
Ejby Industrivej 80
DK-2600 Glostrup
+45 88 888 203
info@ceas.dk

SOUTH ITALY

Edilo Srl
Via E. Gianturco 62-64
I-80146 Napoli NA
+39 081 734 94 33
campania@drytech.ch

INTERNATIONAL PARTNERS

international@drytech.ch
ARGENTINA **FRANCE**
AUSTRALIA **SOUTH KOREA**
BRASIL

www.drytech.ch

