

DrytechTM

Waterproofing System Engineering

DRYCOAT ARCHITECTURAL WATERPROOFING



DRYCOAT

THE SIMPLE WATERPROOFING FOR SURFACES AND COMPLEX DETAILS

A SINGLE WATERPROOF COAT: CONTINUOUS, ELASTIC AND THIN

Drycoat is a two-component resin with reinforcement which, once installed, has a thickness of 2-3 mm.

This is why it makes it possible to waterproof difficult parts with a single continuous coating, such as: the minimum differences in height in front of doors and windows, pipes, railing supports, drains and eaves.

APPLICATIONS AND INSTALLATION

Drycoat is used in the waterproofing of terraces, balconies, canopies, loggias, inverted roofs, showers, swimming pools, flower tubs.

Any type of tile can be laid on the Drycoat mantle - sandblasted with quartz - as well as floating slabs on substrates with mortar or on a gravel bed.

The tiles must be laid with a waterproof glue that seals the joints and prevents capillary absorption.



DRYCOAT AT SIGHT

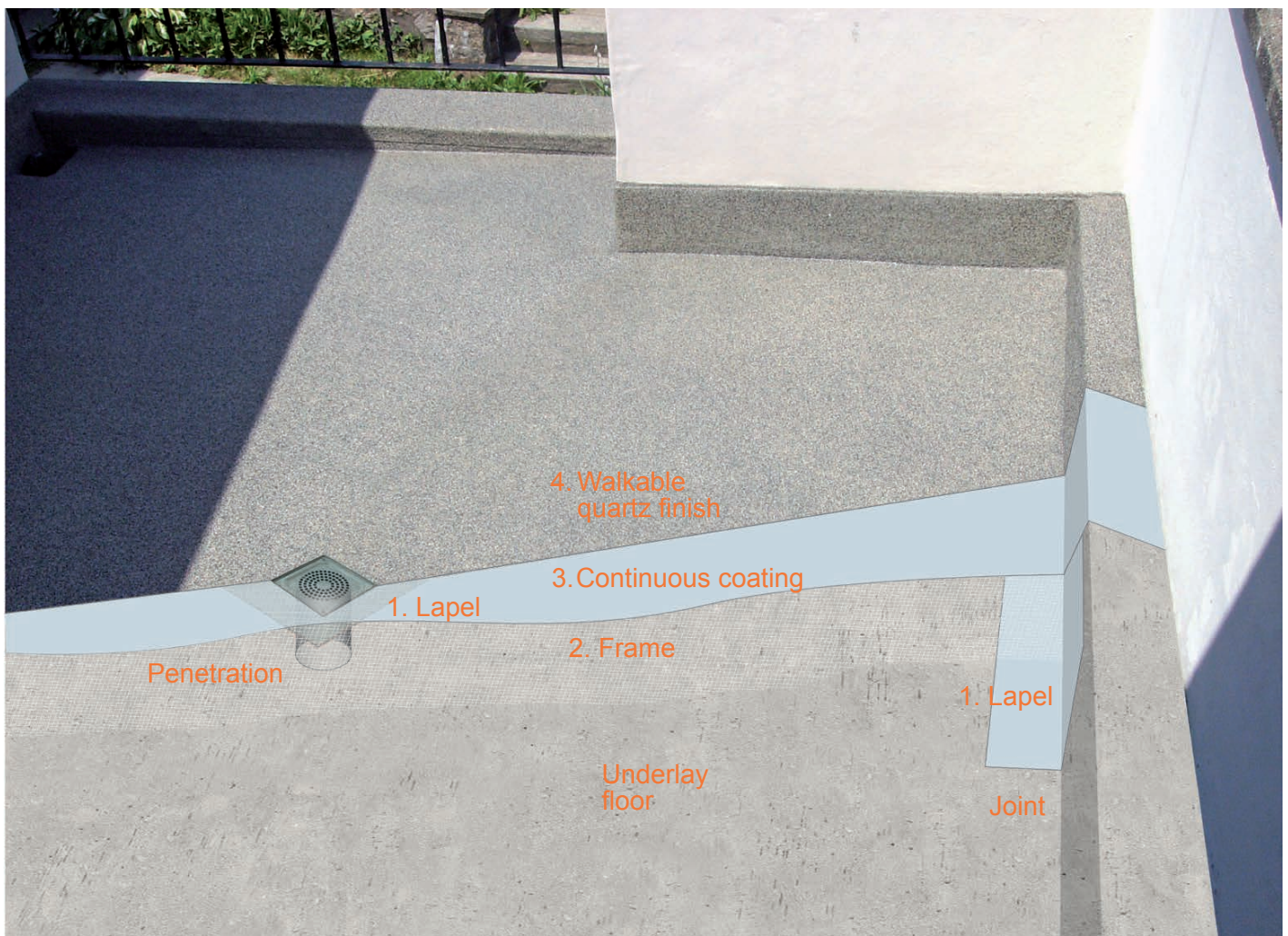
Drycoat itself can also be used as a walkable and decorative surface in its aesthetic finishes, available in many colors. The degree of roughness of the surface can be chosen, in compliance with the regulations in force.

Atmospheric agents - such as rain, bad weather or temperature changes - do not change the waterproofing characteristics of the product.

Drycoat can be washed like a normal outdoor floor, with water and neutral detergents.

RESTORATION

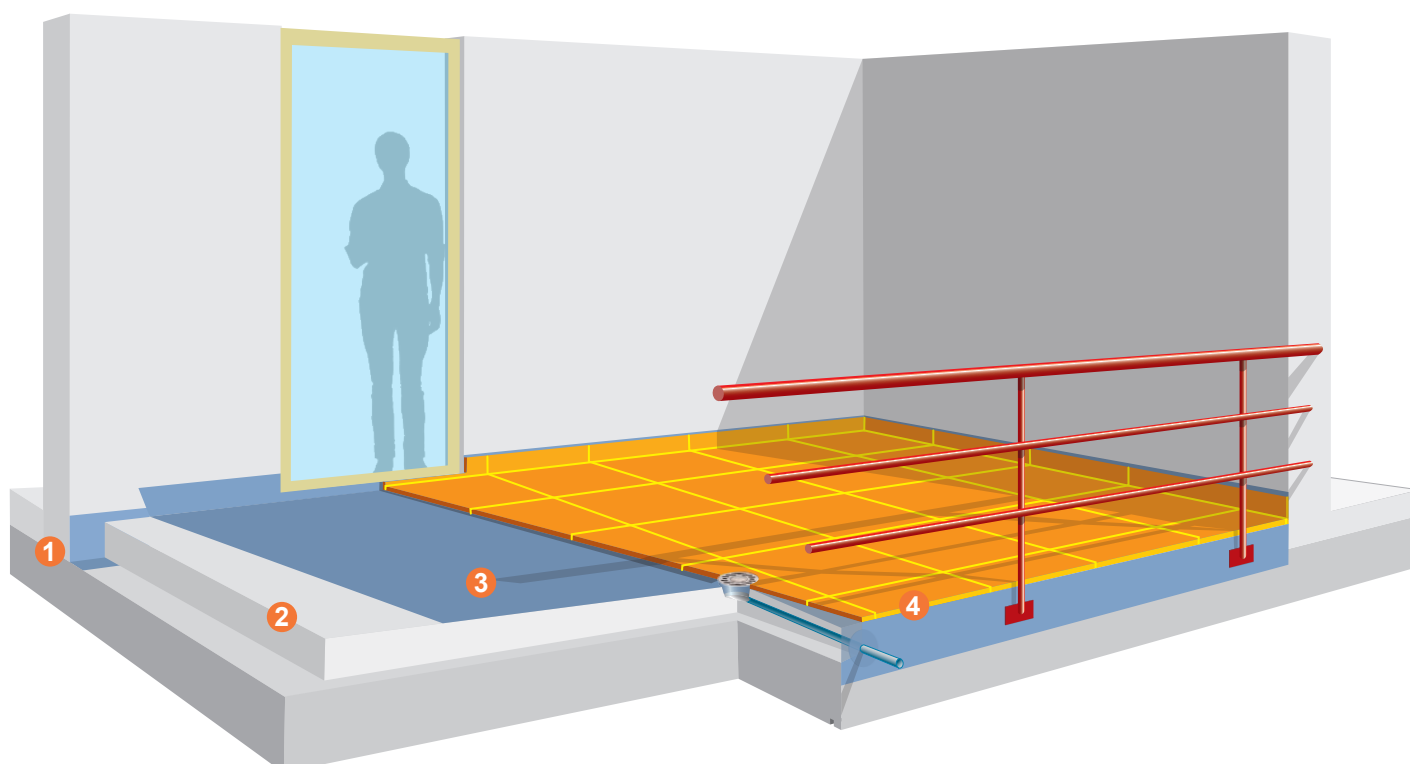
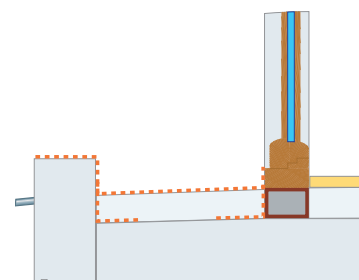
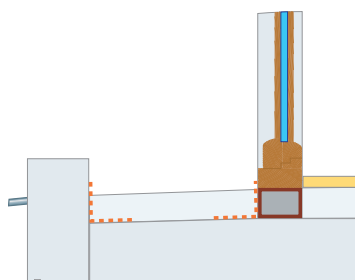
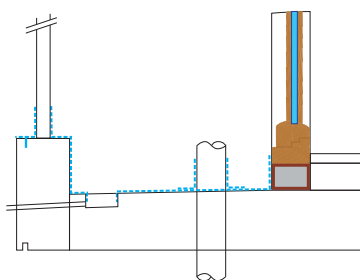
In renovations Drycoat can be applied directly to the existing surface. No special preparation work or the removal of old tiles are required.



DRYCOAT INSTALLATION

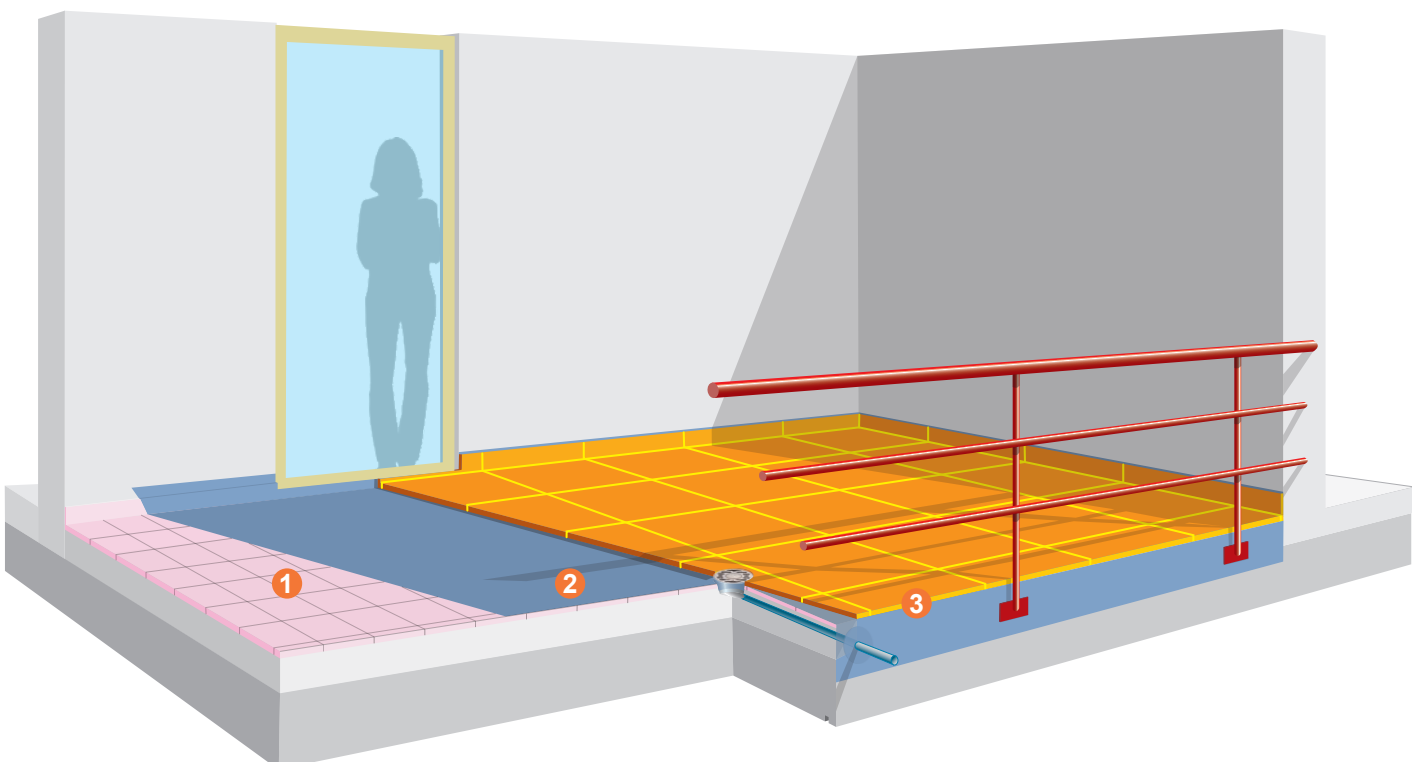
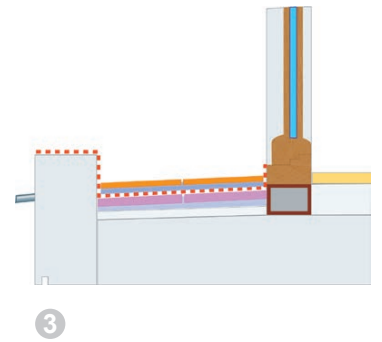
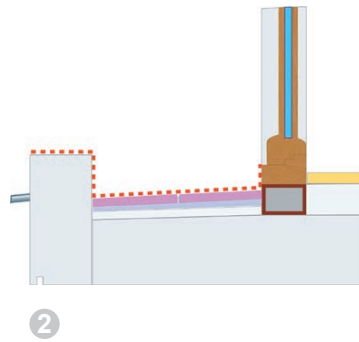
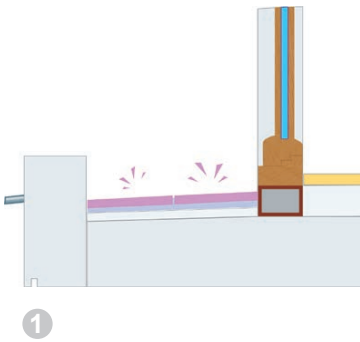
NEW SURFACES

1. Drycoat flap on joints, fittings and drains.
2. Casting of the underlay floor.
3. Laying of the Drycoat waterproof covering.
4. Possible installation of the tiles, directly on the Drycoat mantle.



RESTORATION

1. Grinding of existing tiles.
2. Laying the Drycoat waterproof covering, at sight or to be tiled, directly on the existing tiles.
3. Possible installation of new tiles directly on the Drycoat mantle.



FINISHES AND COLORS

AESTHETICS AND COMFORT

Exposed Drycoat is available in numerous colors and finishes, both as a resin and with the addition of granite granules which, in addition to acting as a rough finish, also produce the color.

Depending on the use of the surface, it is possible to choose the fineness of the granulate, from very rough to suitable for walking on bare feet.

As in the sauna tub in the photo, with a super comfortable granulate in two colors: Anthracite for the walls and Light Gray for the steps and the plate.



FINISHING RESINS



RAL 7032



RAL 7043



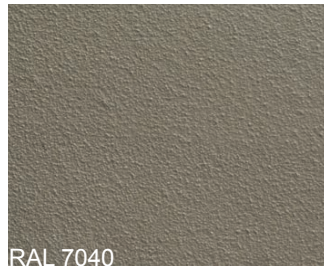
RAL 7037



RAL 7031



RAL 7035



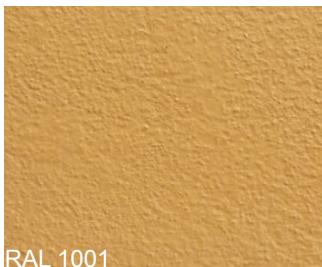
RAL 7040



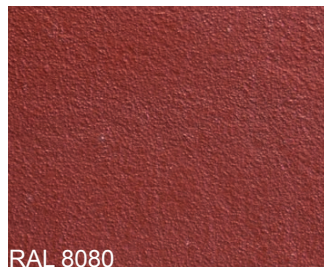
RAL 9010



RAL 7030



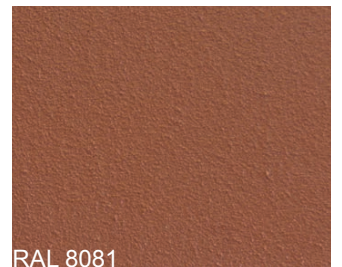
RAL 1001



RAL 8080



RAL 1080



RAL 8081

GRANULES OF GRANITE



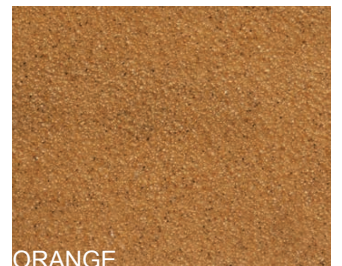
CRYSTAL LIGHT



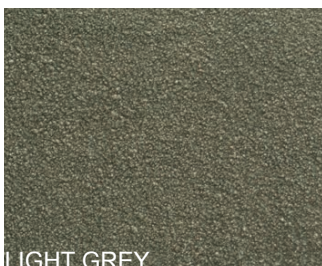
RED



BROWN



ORANGE



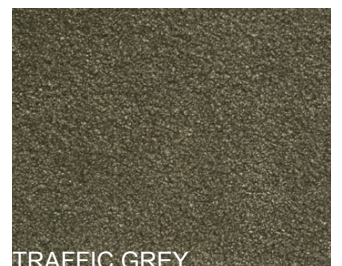
LIGHT GREY



STONE GREY



GRAVEL GREY



TRAFFIC GREY



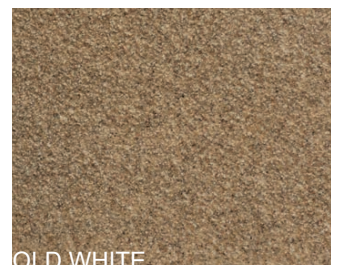
ANTHRACITE



SALT & PEPPER



WHITE



OLD WHITE

TERRACES AND CANOPIES

2 mm of total protection from water and no architectural influence:
Drycoat adheres like a second skin to the shapes and volumes of
the building.





DOORS AND WINDOWS AND COUNTERFRAMES

The threshold / counterframe joint is waterproofed with the Drycoat lapel.

Once the concrete has been poured, the Drycoat covering is spread over the entire surface, connecting it to the lapel of the subframe.

The tiles are laid directly on the waterproof covering.



Drycoat can be applied on any material: from concrete to ceramic, from stone to metal.

The flexibility of application makes it possible to waterproof even details with a complex profile, such as jambs or counterframes, with precision.



JOINTS AND DETAILS

Drycoat represents a practical solution for waterproofing joints and details.

For this reason it is also used to integrate other waterproofing systems against the ground.





SWIMMING POOLS AND TUBS

The continuity of the Drycoat mantle guarantees the sealing of the waterproofing in situations of persistent exposure to water, even stagnant, such as swimming pools, showers or flower tubs.

The brilliant management of details makes it the ideal solution for structures full of crossings, such as lamps and drains in a swimming pool or plumbing systems for fountains.





PENETRATIONS AND DRAINS

Drycoat is functional for waterproofing penetrations and drains because, thanks to its flexibility, it adapts perfectly to the complexity of these details.





STAIRS

The flexibility - also in application - of Drycoat allows the waterproof covering to be adapted to particular structures such as stairs. The joint between the steps and the walls is thus seamlessly waterproofed.





SOGLIE

Il giunto soletta/soglia viene impermeabilizzato con il risvolto Drycoat.

Una volta eseguito il getto del sottopavimento, il rivestimento Drycoat viene steso su tutta la superficie unendolo al risvolto della soglia.



In renovations, Drycoat is laid directly on the existing surface, starting with the details. The waterproofing of the surface is then connected to these.



DRIVE-OVER

The resistance of the mantle and the flexibility of the finishes make Drycoat particularly suitable for covering vehicle surfaces, adapting the roughness to the type of use: as in the case of particularly steep ramps, maneuvering areas and garage entrances.





DRYTECH

ITALY

Drytech Italia Impermeabilizzazioni Srl
Via Valtellina 6
I-22070 Montano Lucino CO
+39 031 47 12 01
italia@drytech.ch

SWITZERLAND

Drytech SA
Via Industrie 12
CH-6930 Bedano TI
+41 91 960 23 40
ticino@drytech.ch

GERMANY

Drytech GmbH
Im Altenschemel 39a
D-67435 Neustadt
+49 6327 97 22 50
info@drytech-germany.de

BERLIN

Motzener Straße 12-14
D-12277 Berlin
+49 30 475 954 05
info@abdichtung-in-berlin.de

FRANKFURT

Freudenthaler Straße 39
D-65232 Taunusstein
+49 6128 306 688
frankfurt@drytech-germany.de

MUNICH

Landshuter Allee 8-10
D-80637 München
+49 89 545 582 05
muenchen@drytech-germany.de

IRELAND

Drytech Waterproofing Ltd.
Spring Garden Lodge - Sallins Road
Naas, Co. Kildare.
+353 45 83 11 60
ireland@drytech.ie

UK

Drytech Waterproofing Ltd.
Berkeley Square House
W1J 6BD, London
+44 20 3959 8611
uk@drytech.ch

CANADA

Drytech Waterproofing Ltd
30 Street SE
7032 Calgary - Alberta
+1 403 230 3050
canada@drytech.ca

**CERTIFIED
PARTNERS**

BASEL

Mareas AG
Gebäudeabdichtung
Bottmingerstrasse 27
4102 Binningen
+41 61 525 15 15
info@mareas.ch

DENMARK

Christiansen & Essenbaek A/S
Ejby Industrivej 80
DK-2600 Glostrup
+45 88 888 203
info@ceas.dk

SOUTH ITALY

Edilo Srl
Via E. Gianturco 62-64
I-80146 Napoli NA
+39 081 734 94 33
campania@drytech.ch

INTERNATIONAL PARTNERS

international@drytech.ch
ARGENTINA **FRANCE**
AUSTRALIA **SOUTH KOREA**
BRASIL

www.drytech.ch

