

Data sheet

Drycoat Finish Color

Colored sealant finish

PRODUCT

Two-component, UV-stabilized, pigmented, fast-reacting sealant based on polymethylmethacrylate (PMMA).

USAGES

Drycoat Finish Color viene utilizzato come sigillatura non pigmentata su sistemi Drycoat in PMMA sabbati e non sabbati per aumentare la resistenza chimica e meccanica.

ADVANTAGES

- > Polymerises and becomes resistant in a short time
- > Transparent with opaque appearance
- > Solvent-free
- > Resists UV rays

PREPARATION OF THE SUBSTRATE

The substrates to be sealed must be solid, dry, free of components that are detaching or that reduce adhesion. During execution, the surface temperature must be at least 3 ° C above the dew point. At lower temperatures, a film of moisture with a non-stick action may form on the surface to be processed.

MIXING

After mixing the base resin well, add the relative quantity of catalyst, mixing slowly with a stirrer and taking care not to form lumps. Mixing time at least 2 min.

PLACEMENT

Drycoat Finish Color can be processed at ambient and substrate temperatures of at least 0 ° C up to max. +35 ° C. In closed environments, mandatory ventilation must be provided with at least 7 air changes per hour. Evenly apply Drycoat Finish Color in a criss-cross direction with a universal roller. Consumption at least 0.50 kg / m². Rain resistant after about 30 minutes, passable after about 2 hours.



Data sheet

Drycoat Finish Color

Colored sealant finish

PACKAGING

Goods in a bucket
Summer / winter regulation

10,00 kg / 10,00 kg Drycoat Finish Color
0,20 kg / 0,60 kg Drycoat Catalyst

STORAGE

Fresh, dry, frost-free, unopened and unmixed about 6 months. Direct solar radiation on packages should be avoided, even on construction sites.

RESISTANCE TO CHEMICAL AGENTS

Ethyl acetate --	Diesel ++
Acetone -	Ethanol 10% ++
Acetic acid 10% ++ *	Vegetable fats ++
Hydrochloric acid 10% ++ *	Potassium hydroxide 10% ++ *
Sulfuric acid 10% ++ *	Castor oil ++
Water ++	Engine oil ++
Sea water ++	Sodium chloride solution ++
Ammonia 10% ++ *	Caustic soda solution 10% ++ *
Petrol ±	Orange juice ++
Coffee ++	Turpentine ±
Sanitary detergents ++ *	Red wine ± *
Dishwashing detergent ++	Xylene -

Note:

- ++ = resistant
- ± = limited resistance (approx. 24 hours)
- = not resistant
- * = possible color change

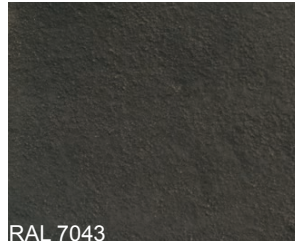
Colored sealant finish

Purely indicative color reproduction

FINISHING RESINS



RAL 7032



RAL 7043



RAL 7037



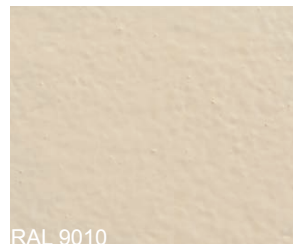
RAL 7031



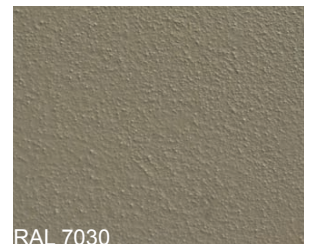
RAL 7035



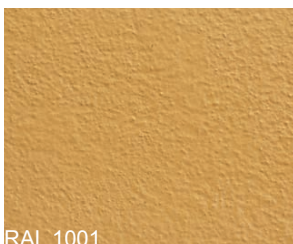
RAL 7040



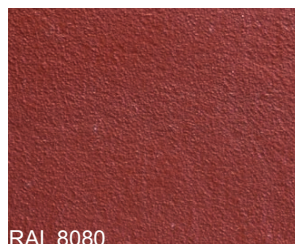
RAL 9010



RAL 7030



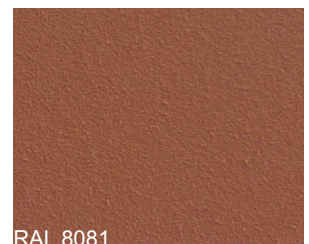
RAL 1001



RAL 8080

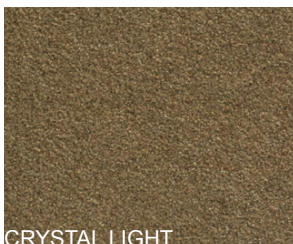


RAL 1080

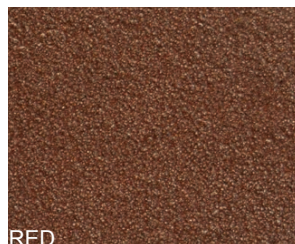


RAL 8081

GRANITE GRANULATES



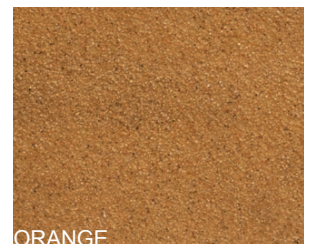
CRYSTAL LIGHT



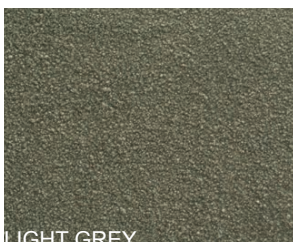
RED



BROWN



ORANGE



LIGHT GREY



STONE GREY



GRAVEL GREY



TRAFFIC GREY



ANTHRACITE



SALT & PEPPER



WHITE



OLD WHITE