

EX-POST GASKETS



EX-POST GASKET FOR DUCTS OR ELECTRICAL SYSTEMS

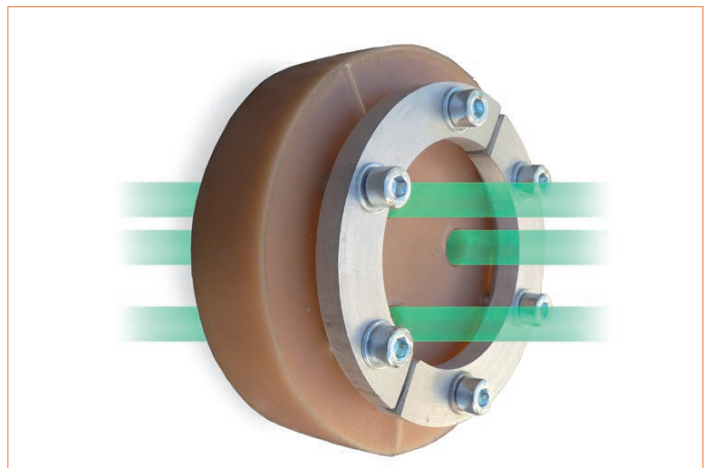
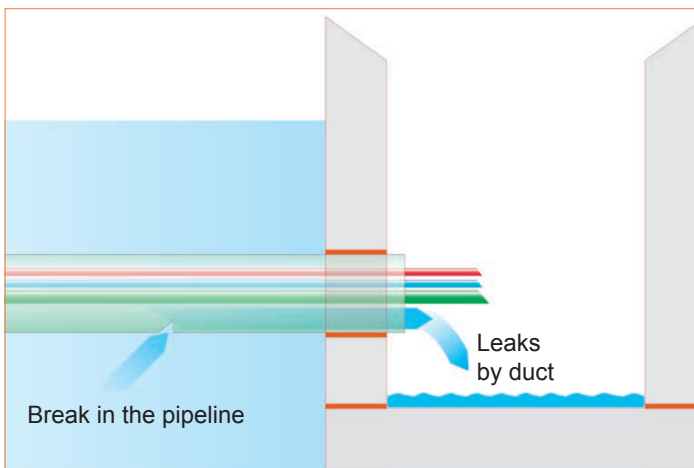
STOP INFILTRATIONS

WITHOUT SUSPENSION OF ELECTRICITY

Drytech has created Ex-post Gaskets to waterproof the pipes of electrical systems, already content with the cables, which capture water from the outside of the structure (for example for breakages from re-burial).

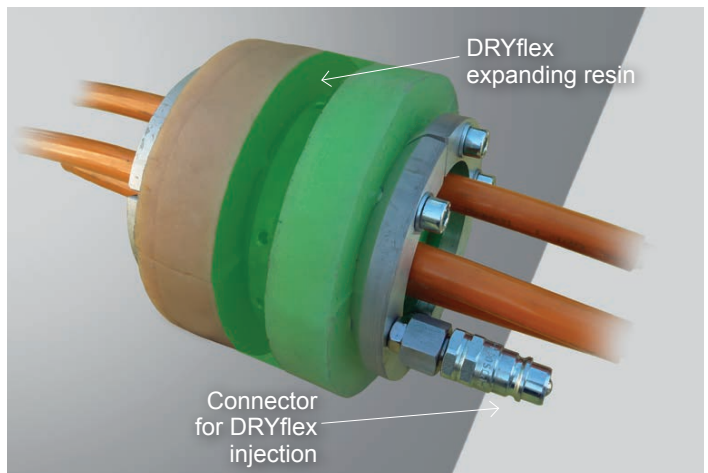
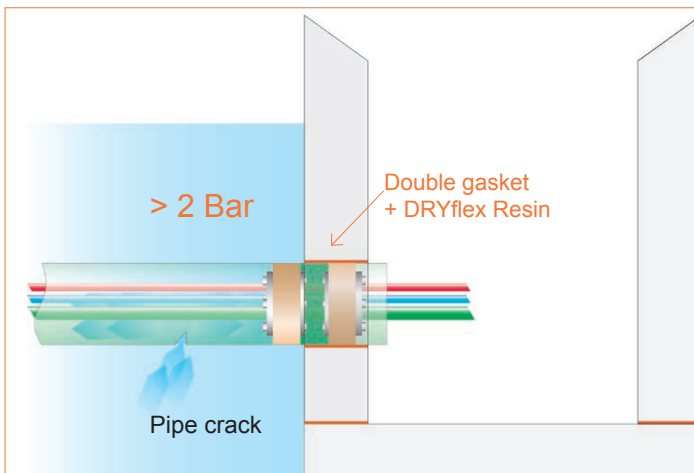
The Ex-Post Gasket seals the duct and incorporates the cables, without having to remove them and without interrupting the energy supply.

The gasket is made to measure for the internal diameter of the pipe and the number and diameter of the passing cables.



PRESSURES > 2 BAR

For infiltrations with pressures higher than 2 bar, a double gasket with an injectable cavity with DRYflex expanding resin is provided through a suitable visible connector.



DRYTECH INTERNATIONAL
+41 91 960 23 49
info@drytech.ch

DrytechTM
Waterproofing System Engineering

SWITZERLAND DRYTECH SWITZERLAND

Drytech SA
Via Industrie 12
CH-6930 Bedano TI
+41 91 960 23 40
ticino@drytech.ch

ITALY DRYTECH ITALIA

Drytech Italia Impermeabilizzazioni Srl
Via Valtellina 6
I-22070 Montano Lucino CO
+39 031 47 12 01
italia@drytech.ch

INTERNATIONAL PARTNERS

international@drytech.ch

ARGENTINA

DENMARK

AUSTRALIA

FRANCE

BRAZIL

SOUTH KOREA

**UK
IRELAND**

UK
Drytech Waterproofing Ltd.
Berkeley Square House
W1J 6BD, London
+44 20 3959 8611
uk@drytech.ch

IRELAND
Drytech Waterproofing Ltd.,
Spring Garden Lodge, Sallins Road,
Naas, Co. Kildare.
+353 45 83 11 60
ireland@drytech.ie

GERMANY

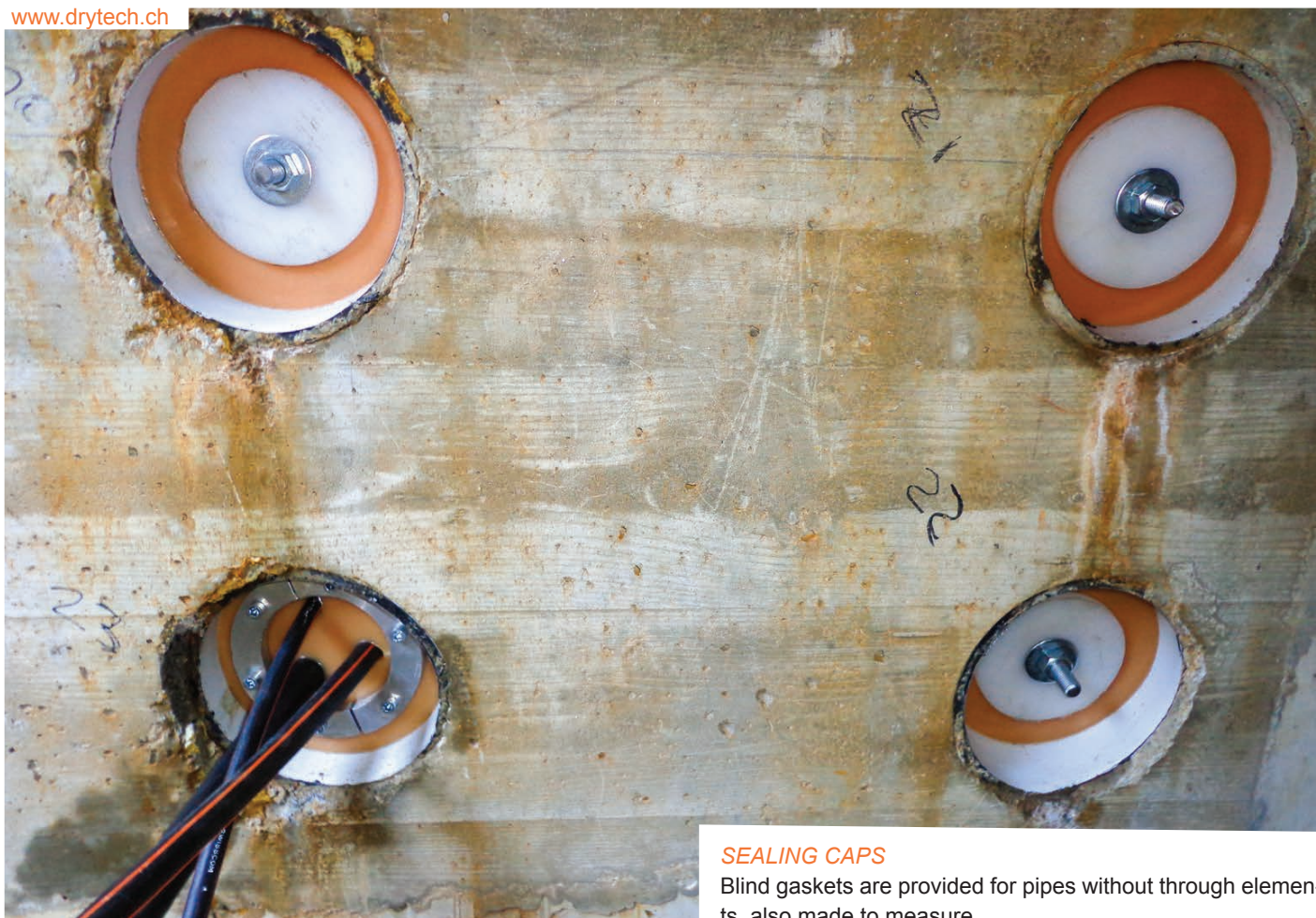
ZENTRALE
Drytech GmbH
Im Altenschemel 39a
D-67435 Neustadt
+49 6327 97 22 50
info@drytech-germany.de

BERLIN
Motzener Straße 12-14
D-12277 Berlin
+49 30 475 954 05
info@abdichtung-in-berlin.de

FRANKFURT
Freudenthaler Straße 39
D-65232 Taunusstein
+49 6128 306 688
frankfurt@drytech-germany.de

MUNICH
Landshuter Allee 8-10
D-80637 München
+49 89 545 582 05
muenchen@drytech-germany.de

www.drytech.ch



SEALING CAPS

Blind gaskets are provided for pipes without through elements, also made to measure.